



Newman Foundation, INC.

Bringing Christ's light to our community

Enriching our Catholic future >>

Where do we come from? Why are we here? Where are we going?

The Newman Foundation Inc. is one of many organizations that stem from the Newman movement. These various entities are concerned primarily with the work of the Church at secular universities through religious education, pastoral care, and apostolic formation of Catholic students. However the Newman spirit moves beyond narrow concern only for fellow Catholics and is more broadly concerned with the presentation of Catholic culture and thought throughout the entirety of the university community.



SSCIT Meeting

see page 3

10 in 10 · 10 in 10 · 10 in 10

**The answer
is 10.**

10 in 10  Newman
Foundation INC.
Bringing Christ's light to our community 10 in 10

see page 2 for the answer

The patron of all Newman organizations, John Henry Cardinal Newman, provides a source of unity for works occurring in various stages and in diverse contexts. He was an English scholar and a churchman, an appropriate patron for the threefold mission of Newmanites; the mission is not only religious but intellectual and social as well.

The Newman Foundation, Inc. is an independent non-profit corporation that seeks to deepen and integrate personal, spiritual and intellectual development at Newman Centers, the University of Kentucky, and the Catholic Diocese of Lexington, by providing financial resources, physical facilities and initiated programs.

more on **2**

Our current goal is \$100,000 in 10 months.
You are giving money for 3 central purposes:

1. To fully fund our Grants Program and our Distinguished Speakers Series encouraging innovative learning programs in diocesan churches
2. To enhance our capacity for supporting campus ministry, thereby building for the future one mind (heart and soul) at a time
3. To further the mission of the Newman Apostolate by supporting Newman Centers and Newman Clubs throughout Kentucky

+ Our Mission:

We are an independent non-profit corporation that seeks to deepen and integrate personal, spiritual and intellectual development at Newman Centers, UK, and the Catholic Diocese of Lexington, by providing financial resources, physical facilities and initiated programs.

+ A wise man once said...

“A man would do nothing if he waited until he could do it so well that no one would find fault with what he has done”

-John Henry Cardinal
Newman on life

2013 Grants:

- > **Ss. Francis & John Catholic Parish**
- > **Catholic Campus Ministry of St. Mark**
- > **UK Newman Center Music Program**
- > **St. Paul Parish Youth Group**

The Question is...Why Give to the NFI 2013 Fundraising Campaign?

Because the NFI...

1. Purchased it (the Newman Center Property in 1969)
2. Built it (the Newman Center in 1972)
3. Renovated it (added kitchen, lobby, student lounge and music room in the 90's)
4. Fixed it (following the flood in 1992)
5. Bought it (gave over \$100,000 to the music program since 1987 the organ, the tympani, the handbells, and the baby grand piano)
6. Funded it (\$2,000,000 UK Chair of Catholic Studies in 2005)
7. Sent them (student ministry trips for 40+ years)
8. Supported them (\$100,000 in grants since 2001 supporting program requests across the Diocese and throughout the Appalachian parishes)
9. Brought them (100 distinguished speakers since 1983)
10. Needs you (without you and your support, we cannot do what we do!)

We're raising \$100,000 and 1,000 new Friends in 10 months!

**Give now online at www.newmanfnd.org
or call 859-255-0880**

Announcing the NFI
2013 10 & 10
Campaign.

We need your help
and support to serve
YOUR community.

Look at the positive
change YOU have
affected!

A letter from the President

The Newman mission is that of infusing a student's college experience with the spirit of Catholicism. It is vital that young people understand that the opportunities and responsibilities of college are not in conflict with their deepening religious engagement. Rather, the two entities may nourish each other as the intellectual and spiritual aspects of their lives become more closely intertwined. Developing a community of friends and faith, putting faith into action, and growing as an adult in the Church and in a secular community go hand in hand.

At UK, students have ample opportunity to engage with their faith through the work of various organizations. The Newman Foundation seeks to strengthen students in their Catholic faith and move them closer to Christ. Originally this was by building a Newman Center at UK. Today NFI continues this mission through its grants programs, distinguished speakers, capital campaigns, and special projects. Its members generously give of their time, talent, and treasure to create opportunities that enrich our Catholic future.

Through its work, NFI reaches young people before college, nourishes them as they pursue their degrees, and then continues to support them and their families on their journey of faith.

-Elizabeth Lucas

**+ "Cor ad cor loquitor"—
heart speaks unto heart**

This motto appears on the John Henry Cardinal Newman coat of arms

Director's Report

Readers,

Since our last newsletter you have a new Executive Director at your service. I am happy to work for NFI not only because I believe in our work, but because it is a privilege to enhance our community through your generosity.

Prior to taking this position I served the Board as a student representative and then as Secretary on the Executive Committee. I could not be more pleased to continue to be of service!

Your support has accomplished so many things, and I can only hope to be a small part of that continued tradition.

You are raising and nourishing leaders for the future—is there a labor more difficult or more inspirational? This IS faith in action. Here's to a great year!

-Maria Bane

2013 NFI Board of Trustees

Beth Lucas
President

Franklin Hoopes
Vice President

Joe Warren
Treasurer

Daniel Kelly
Secretary

John Connell

Carol Cottrill

Julie Goodman

Larry Hehman

Jessica Jones

Rahul Karanth

Charles Knapp

Tom Rolfes

Roger Teague

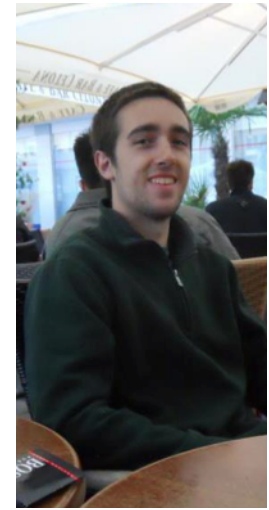
Rosemary Vance

Tom Woods

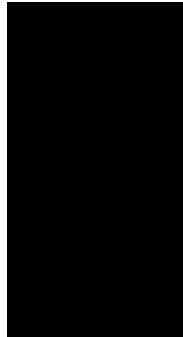
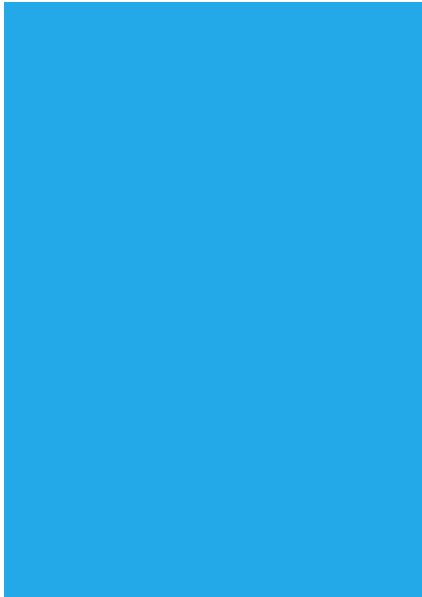
We are pleased to present the 2013 NFI nominees!

Daniel James Kelly

I recently graduated from the University of Kentucky with a double major in Electrical and Computer Engineering and am currently working as a Power Systems Engineer for Schneider Electric here in Lexington. During college I was involved in on-campus organizations such as the Newman Center music program, the Kappa Alpha Fraternity and the Institute of Electrical and Electronics Engineers (IEEE). This provided me with valuable service experiences such as working with Habitat for Humanity, Central Kentucky Ride for Hope, and others.

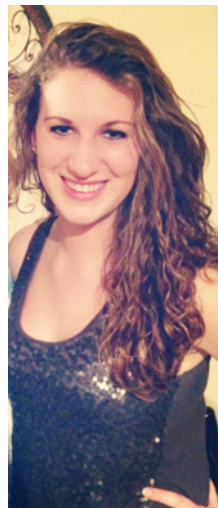


During my time at Newman Center and through my relationships with its parishioners, I have become familiar with the Newman Foundation's mission and with their story. I hope to bring my creativity and work ethic to a board that strives to serve my community. I am particularly interested in planning fundraising and promotional events and facilitating student involvement in service oriented activities. I look forward to learning much from this board and to reaching out to the student community, as they have much to offer.



Jessica Jones

I will be a junior at UK studying Medical Laboratory Sciences with a Pre-Med focus. On campus, I'm involved with the College of Health Sciences and the Medical Laboratory Sciences Club. I attend the Newman Center where I cantor and have been a choir member for the past couple of years. In addition to singing, I like to read, listen to opera, and play golf and tennis.



I'm from Paducah, where I like to volunteer with a local food service called Martha's Vineyard and attend St. Thomas More Catholic Church.

I am interested in being a part of the Newman Foundation because I would like to bring an undergraduate student's point of view to the table. My role would be one of a liaison between the Foundation and the college age generation.

Rahul Colin Karanth

I graduated in 2011 from Clemson with a BS in Industrial Engineering and a minor in Math. I currently work in Lexington as a Bosch Production System Engineer at Bosch Rexroth Pneumatics, working in continuous process improvement and workstation design.



I grew up in Virginia, where my connection with my church allowed me to participate in our summer work camps. I was also involved in tennis and cross-country. These experiences taught me the importance of giving back to my community and the desire for self improvement. In college, I became involved in campus ministry at Clemson, leading retreats and organizing service projects. I build a community of friends and of faith, which is what I hope to continue to do here as part of NFI.

How can I get involved?

We appreciate all those who have served with us in the past, those who currently serve our board, and all those yet to come. Here are some ways you can help:

1. Contribute monetarily by visiting newmanfnd.org or by sending checks to our office at 628 N. Broadway
2. Apply for grants via our website or recommend that others do so
3. Contact us at newmandirector@gmail.com and suggest speakers and events that you'd like to see happen
4. Give of your time by offering to help with receptions, office work, and special projects
5. Spread the word about the Newman Foundation at work, at school, in your parish, and invite us to support you!

Thanks again to all of you-- our donors, volunteers, Trustees, interns, readers, and supporters of all types, past present, and future. We could not do it without you!

Calendar of Events

Social>>

+ Fellows and Founders Dinner: Coming in October... stay tuned for details

+ Coffee & Donuts at St. Joe's: September 8th after the 8am mass in the chapel at St. Joseph's hospital. Come meet the board and ask us your questions!

Students>> Don't forget to take advantage of these great opportunities!

+Register for courses:

Fall & Spring HIS 191 *History of Christianity*

Spring CLA/ HIS 191, *Christians in the Roman Empire*

+Join clubs:

Society for the Study of the Catholic Intellectual Tradition (SSCIT) is a student group that meets monthly during the school

year to discuss a wide variety of readings. Professor Lou Swift will be the faculty adviser while Dr. Hunter is on sabbatical. If you'd like further information contact the student president, Ollie Wiitala: mwiitala@gmail.com

DISTINGUISHED SPEAKERS' PROGRAM

**COMING
SOON**

**Dr. Margaret Nutting
Ralph on *Nourished
and Ruled by Scripture***

**Tuesday October 15th 7pm at the W.T.
Young Library on UK's campus** (parking available in the pay lot on Hilltop Ave.)

The Catholic Church teaches us to be *nourished and ruled by Scripture*. The Catholic Church also teaches us to be contextualists, to put the authority of Scripture behind the intent of the inspired author. In this talk we will review the contextualist approach to Scripture and then ask if we are being *nourished and ruled by Scripture* in regard to issues such as homosexuality and women's ordination.

Dr. Ralph is the author of 15 books on Scripture, including the best seller *And God Said What?* She also served as Secretary of Educational Ministries for the Diocese of Lexington for 16 years.

Contact us!

Newman Foundation, Inc.
628 N. Broadway
Suite 303
Lexington, KY 40508

Tel: (859) 255-0880

Web: newmanfnd.org

Email: newmandirector@gmail.com